

KT8-30R

Circular Chart Recorder



FEATURES

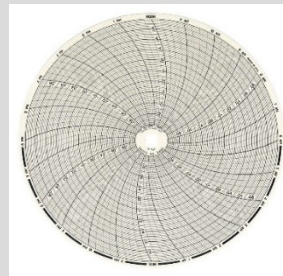
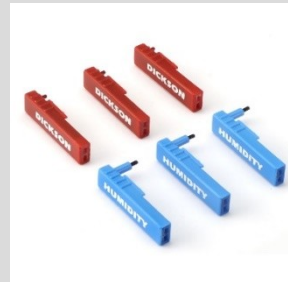
- Display
- Audible Alarms
- Relays
- Single K-Thermocouple Replaceable Sensor™

ABOUT

8" (203mm) chart recorders offer the largest resolution out of any chart recorders.

All chart recorders feature a large 8" chart and user-selectable recording time-frames and ranges.

These units are compatible with Dickson's Replaceable Sensors™, making calibrating your chart recorder easier than ever.



For more information, please refer to

T: +31 (0)174 287 160

E: info@vrsupplies.com

W: www.vrsupplies.com

Specifications

- **Alarm Type:** Audio/Visual
 - **Ambient Operating RH Conditions:** 0-95% RH non-condensing
 - **Ambient Operating Temperature Conditions:** 32°F to 120°F (0°C to 50°C)
 - **Battery Backup:** (4) C Batteries
 - **Battery Life:** 1 Month (Avg)
 - **Calibration Options:** N100, N300, N400
 - **Channels:** CH1: Temperature
 - **Chart Rotation Speed:** 24 Hour, 7 Day
 - **Dimensions LxWxH:** 9 3/8"x2 3/4"x10 1/8"
 - **Display Dimensions:** 5 1/8" x 1"
 - **Display Type:** LCD
 - **Enclosure:** Rugged Black ABS Case, Polycarbonate Door, Aluminum Dial
 - **IP Rating:** IP20
 - **Included Accessories:** AC Adapter, Red Pen, (4) C Batteries, Quick Start Guide and Replaceable Sensor™ *Charts sold separately
 - **Mounting Options:** Free Standing or Wall Mount (With Keyhole)
 - **Power Cord:** 6 ft
 - **Power Source:** 120 to 240 VAC, 12 VDC (INTL fittings available); AC Adapter
 - **Power Status Indicator:** LED Indicator
 - **Unit Weight:** 2.45lbs without batteries
 - **Warranty:** 12-Month Limited
 - **Replaceable Sensor SKU:** RS030
- REPLACEABLE SENSOR™ SPECIFICATIONS:
Temperature Accuracy: $\pm 1.8^{\circ}\text{F}$ from -300°F to 122°F ($\pm 1^{\circ}\text{C}$ from -185°C to 50°C)
 $\pm 3.8^{\circ}\text{F}$ ($\pm 2.1^{\circ}\text{C}$) remaining range
Temperature Range: -300°F to 2000°F (-185°C to 1093°C)