

# KT8-21

## Circular Chart Recorder



### FEATURES

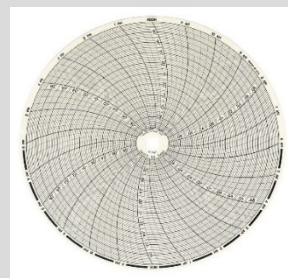
- Display
- Audible Alarms
- Dual Thermistor Replaceable Sensor™

### ABOUT

8" (203mm) chart recorders offer the largest resolution out of any chart recorders.

All chart recorders feature a large 8" chart and user-selectable recording time-frames and ranges.

These units are compatible with Dickson's Replaceable Sensors™, making calibrating your chart recorder easier than ever.



For more information, please refer to

**T:** +31 (0)174 287 160

**E:** info@vrsupplies.com

**W:** www.vrsupplies.com

### Specifications

- Alarm Type: Audio/Visual
  - Ambient Operating RH Conditions: 0-95% RH non-condensing
  - Ambient Operating Temperature Conditions: 32°F to 120°F (0°C to 50°C)
  - Battery Backup: (4) C Batteries
  - Battery Life: 1 Month (Avg)
  - Calibration Options: N100, N300, N400
  - Channels: CH1: Temperature, CH 2: Temperature
  - Chart Rotation Speed: 24 Hour, 7 Day
  - Dimensions LxWxH: 9 3/8"x2 3/4"x10 1/8"
  - Display Dimensions: 5 1/8" x 1"
  - Display Type: LCD
  - Enclosure: Rugged Black ABS Case, Polycarbonate Door, Aluminum Dial
  - IP Rating: IP20
  - Included Accessories: AC Adapter, Red Pen, Blue Pen, (4) C Batteries, Quick Start Guide and Replaceable Sensor™ \*Charts sold separately
  - Mounting Options: Free Standing or Wall Mount (With Keyhole)
  - Power Cord: 6 ft
  - Power Source: 120 to 240 VAC, 12 VDC (INTL fittings available); AC Adapter
  - Power Status Indicator: LED Indicator
  - Unit Weight: 2.45lbs without batteries
  - Warranty: 12-Month Limited
  - Replaceable Sensor SKU: RS021
- REPLACEABLE SENSOR™ SPECIFICATIONS:
- Temperature Accuracy  
±0.9°F from -58°F to 68°F (0.5°C from -50°C to 20°C)  
±1.2°F from 69°F to 122°F  
±2°F over remaining range
- Temperature Range  
-58°F to 158°F (-50°C to 70°C)