

KT8-20

Circular Chart Recorder



FEATURES

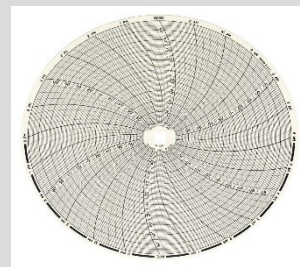
- Display
- Audible Alarms
- Single Thermistor Replaceable Sensor™

ABOUT

8" (203mm) chart recorders offer the largest resolution out of any chart recorders.

All chart recorders feature a large 8" chart and user-selectable recording time-frames and ranges.

These units are compatible with Dickson's Replaceable Sensors™, making calibrating your chart recorder easier than ever.



For more information, please refer to

T: +31 (0)174 287 160

E: info@vrsupplies.com

W: www.vrsupplies.com

Specifications

- Alarm Type: Audio/Visual
 - Ambient Operating RH Conditions: 0-95% RH non-condensing
 - Ambient Operating Temperature Conditions: 32°F to 120°F (0°C to 50°C)
 - Battery Backup: (4) C Batteries
 - Battery Life: 1 Month (Avg)
 - Calibration Options: N100, N300, N400
 - Channels: CH1: Temperature
 - Chart Rotation Speed: 24 Hour, 7 Day
 - Dimensions LxWxH: 9 3/8"x2 3/4"x10 1/8"
 - Display Dimensions: 5 1/8" x 1"
 - Display Type: LCD
 - Enclosure: Rugged Black ABS Case, Polycarbonate Door, Aluminum Dial
 - IP Rating: IP20
 - Included Accessories: AC Adapter, Red Pen, (4) C Batteries, Quick Start Guide and Replaceable Sensor™ *Charts sold separately
 - Mounting Options: Free Standing or Wall Mount (With Keyhole)
 - Power Cord: 6 ft
 - Power Source: 120 to 240 VAC, 12 VDC (INTL 均梳 ttings available); AC Adapter
 - Power Status Indicator: LED Indicator
 - Unit Weight: 2.45lbs without batteries
 - Warranty: 12-Month Limited
 - Replaceable Sensor SKU: RS020
- REPLACEABLE SENSOR™ SPECIFICATIONS:
- Temperature Accuracy $\pm 0.9^{\circ}\text{F}$ from -58°F to 68°F ($\pm 0.5^{\circ}\text{C}$ from -50°C to 20°C)
 $\pm 1.2^{\circ}\text{F}$ from 69°F to 122°F $\pm 2^{\circ}\text{F}$ over remaining range
Temperature Range -58° to 158°F (-50°C to 70°C)